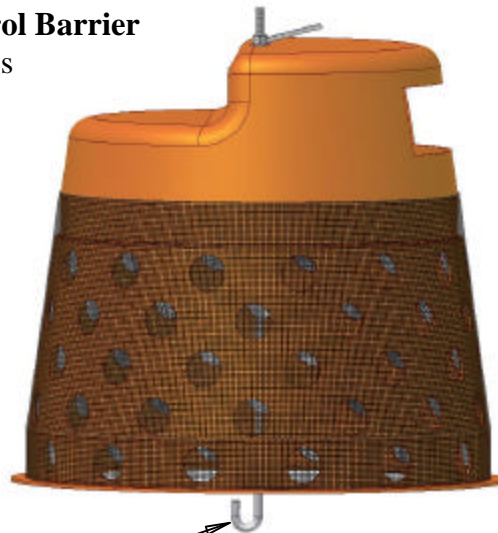


InfraSafe 27" Sediment Control Barrier

for most ditch grate type castings including Neenah R-4342



Durable ecoFriendly HDPE provides a lightweight and strong product that can easily be re-used for the next project.

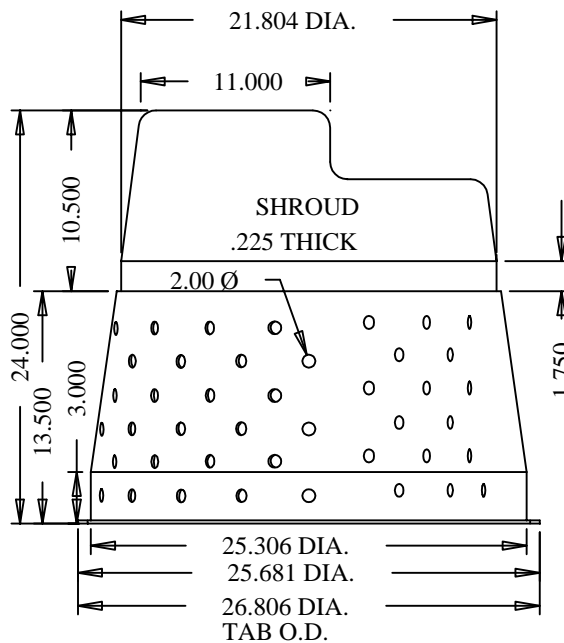
Flow rates compare to or exceed flow rates of commonly used grates.

Silt Fabric Sleeve per MnDOT special provision 3886

Galvanized J bolt w/ wing nut



Patent pending
Royal Enterprises



- UltraViolet Resistant
- Easily maintained
- Easy to install
- Bolts to casting grate

Distributed By:



Phone: 763-478-2027



www.royalenterprises.net

protect **TODAY** by building for **TOMORROW**

Product design does not interfere with load bearing capacity of frames.

*27" InfraSafe Sediment Control Barrier - DG
(for use with Ditch Grate Inlet Castings)*

Standard Details

P.O. Box 430 • 30622 Forest Blvd • Stacy, MN 55079 • Ph: 651.462.2130

Plate #
ISCB-27DG

Rev. Date:
6-2-05 SEG