

InfraSafe Debris Collection Device

for Neenah R-3250-006.
(MnDOT 802 or 805)
curb boxes



Durable ecoFriendly
HDPE provides a
lightweight and strong
product that can easily be
re-used for the next project.

Basket design provides
larger filter area and
provides easy cleaning,
reducing overflow
instances and sediment
load on the sewer system.



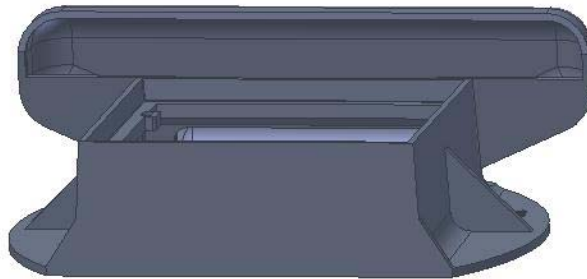
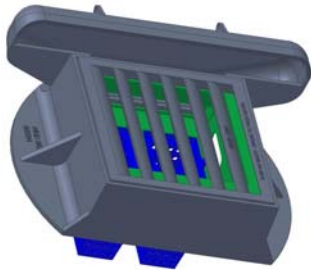
UltraViolet Resistant

2 Individual baskets for
ease of maintenance
-- approximate full
weight of 50 lbs.

Flow rates compare to or
exceed flow rates of
commonly used grates.



400 micron bag
available for use
inside basket



Patent pending
Royal Enterprises

Product design does
not interfere with
load bearing capacity
of frames.

Distributed By:



www.royalenterprises.net

protect **TODAY** by
building for **TOMORROW**

Filter Area	2.75 ft ²
Overflow Area	0.4 ft ²
Maximum Overflow Rate (@7" head)	2.00 cfs
Maximum Overflow Rate (@13" head)	2.90 cfs
Basket Weight (empty)	1 lb
Basket Weight (full - approx.)	50 lbs



Phone: 763-478-2027

InfraSafe 2' x 2' Debris Collection Device

Standard Details

Plate #
DCD-22

Rev. Date:
10-14-05 SEG

P.O. Box 430 • 30622 Forest Blvd • Stacy, MN 55079 • Ph: 651.462.2130