

# ROAD DRAIN

WIMCO PRODUCT LINE

**Making sediment control easy.**



**PORTABLE SEDIMENT  
CONTAINMENT SYSTEM**



**INTERLOCKING SILT FENCE**



**CURB AND GUTTER**



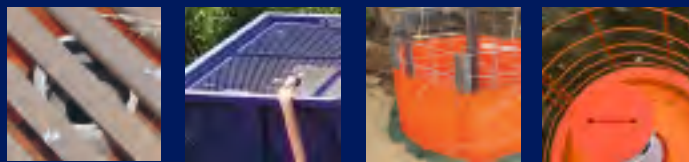
**TOP SLAB**



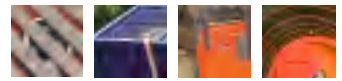
# ROAD DRAIN

WIMCO PRODUCT LINE

Effective sediment control is defined differently by transportation, citizen and construction groups. Our goal was to bring those ideas together. Road Drain reusable products are easy to use and prevent sediment from leaving the construction site which allows construction activity to continue in a timely manner. By developing products that are reusable, Wimco makes sediment control cost effective. We will continue to explore new ways of meeting the challenging demands of the construction industry.



U.S. Patent Number 6,609,852 & 7,052,207  
Other patents pending.



## Inlet protection on your job site is simple with the **ROAD DRAIN CURB & GUTTER**

Since 2001, the Road Drain Curb & Gutter from Wimco has made it easy to keep storm drains clear of silt and debris. Our patented design allows water to drain quickly in the heaviest rainfall while not interfering with pedestrian and vehicle traffic. This is what has made Wimco become a market leader in reusable inlet devices.

### **CURB & GUTTER**

#### **Product highlights**

- Minimizes vehicle hazards by not allowing storm water or debris to build-up in the roadway
- Two overflows ensure heavy rainfalls exit the roadway without worry of street flooding
- One-person cleaning operation or quick use of VAC system will keep products working properly
- Visible while in place and allows vehicle traffic over casting
- Keeps excess concrete out of the manhole structure while the curb is formed around the casting
- Keeps pedestrians safe while the concrete curb is curing prior to placement of casting grate
- Reusable and can be fabricated to fit most castings

#### **Post Construction**

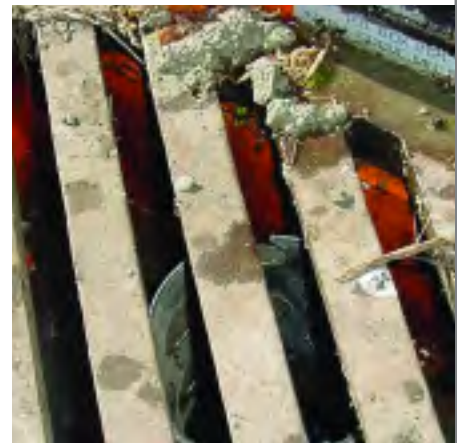
- Hydrocarbon pillows

**U.S. Patent Number  
6,609,852 & 7,052,207  
Other patents pending.**



*The Road Drain Curb & Gutter uses a replaceable filter sock to keep silt and debris out of storm drains.*

*With the Road Drain Curb and Gutter, two overflows and ample filtration area allow construction operation to continue unimpeded.*







# 820 ROAD DRAIN PORTABLE SEDIMENT CONTAINMENT SYSTEM

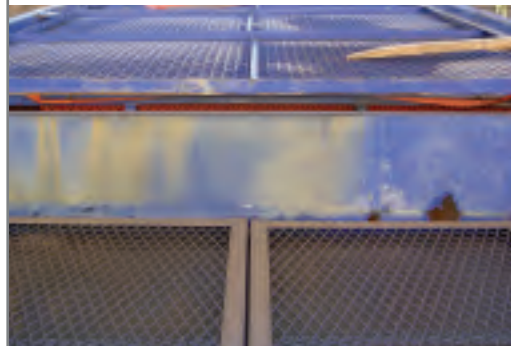
The Road Drain Portable Sediment Containment System is simple and fast. Our containment system allows dewatering activities to be set up and moved without complicated water discharge plans.

## SEDIMENT CONTAINMENT SYSTEM

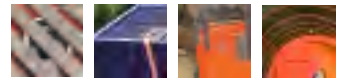
### Product highlights

- Weir with suspended bed filter
- Wood and monofilament filter media
- Moved with boom truck, loader forks or crane
- 6" and 3" discharge hose hookup
- Low cost/Reusable system
- Ready to use upon arrival
- Excellent for limited space dewatering areas
- Product weight: 4,800 lbs
- Roll off compatible model

**U.S. Patent Number**  
**6,609,852 & 7,052,207**  
**Other patents pending.**



*Lockable safety grates*



## Try our reusable **ROAD DRAIN INTERLOCKING SILT FENCE**

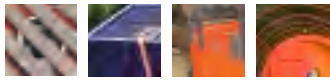
[insert text]

### **INTERLOCKING SILT FENCE**

#### **Product highlights**

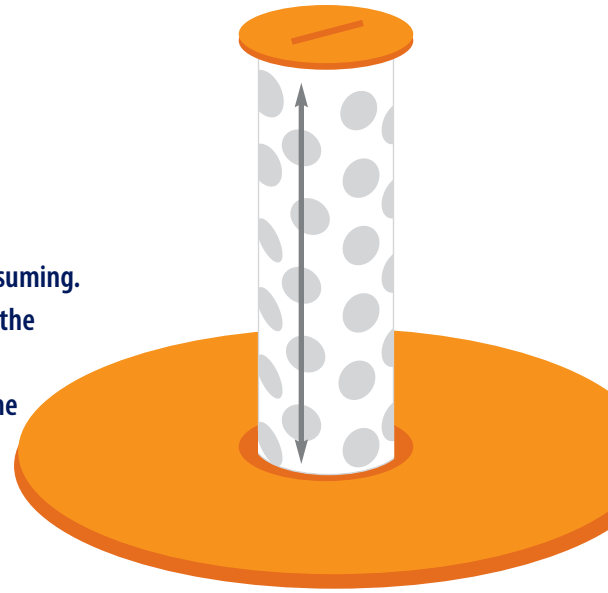
- Galvanized 24" x 36", 36" x 36", and 48" x 36" panels
- Unlimited combinations by connecting additional panels
- Purchase individual panels to create own sizes.
- Reusable—just attach silt fence material with zip ties
- Self standing and easy to transport from job to job
- Allows large filtration surface area for draining large job sites
- Adaptable to many applications and can be used with Road Drain Top Slab model or casting





## Save time and money with the **ROAD DRAIN TOP SLAB**

Prior to the Road Drain Top Slab, temporary sediment control was time-consuming. The Road Drain Top Slab is the only product you need from start to finish of the pre-curb/paving operations. Since 1999, contractors have chosen Wimco products for their ease and reusability. Contractors have been using the same device for more than six years, resulting in cost benefits that amount to multiple pay units per original purchased product.



### **TOP SLAB**

#### **Product highlights**

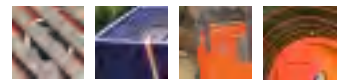
- Saves time and money by keeping silt and debris out of storm drains
- Allows water to exit efficiently from roads during heavy runoff
- Can be graded around or driven over by all types of construction equipment and vehicles
- Allows for vehicle traffic up to a 20,000 lb. axle weight (OSHA standard 1910.23 and 1926.502)
- Adjusts in seconds to filter water
- Consists of a durable steel plate, drain tube and silt sock
- Approved by several Departments of Transportation
- Fits 2' x 3' or 27" catch basins (custom sizes are also available)
- All types of filter media can be used to meet local specifications
- Custom name imprinting available

*Shown with optional  
RD prefilter  
(no fabric shown)*



*The Road Drain Top Slab allows you to recess the drain tube to its down position during work hours so construction traffic and grading can continue unimpeded.*





## PRODUCT REFERENCE

Since 1999, contractors have chosen Wimco products for their ease and reusability. Contractors have been using the same device for more than seven years, resulting in cost benefits that amount to multiple pay units per original purchased product.

### TOP SLAB MODEL REFERENCE

TOP SLAB MODEL	STOCK/ORDER	DIMENSIONS
RD 23	Stock	Fits rough opening for 2' x 3' inlet
RD 24	Stock	Fits rough opening for 24" inlet
RD 27	Stock	Fits rough opening for 27" inlet
RD 30	Stock	Fits rough opening for 30" inlet

### CURB & GUTTER MODEL CASTING REFERENCE

CURB & GUTTER MODEL	STOCK/ORDER	NEENAH CASTING	DIMENSIONS
CG 3067	Stock	R-3067	35-1/4" x 17-3/4"
CG 3067-NB	Order	R-3067-C	35-1/4" x 17-3/4"
CG 3250-R*	Stock	R-3250-A	25-3/4" diameter
CG 3250-R	Stock	R-3250-1	25-3/4" diameter
CG 3250-S	Stock	R-3250-B	22-3/4" square
CG 3250-S*	Stock	R-3250-BSP	22-3/4" square
CG 3290-A	Order	R-3290-A	35-1/4" x 23-3/4"
CG 3290-VB	Stock	R-3290-VB	35-1/4" x 17-3/4"
CG 3501-TR	Order	R-3501-TR	26" x 22-1/2"
CG Curb Block	Stock	To be used with the above CG 3250-R, and CG 3250-S models	

**NOTE:**

- \*If a curb exists with these models, use a deflector Snake Bag or order our CG Curb Back Block.
- Request for different models are developed as needed.
- Contact Wimco for castings not referenced above.

### INTERLOCKING SILT FENCE MODEL REFERENCE

INSF MODEL	STOCK/ORDER	ROUGH DIMENSIONS
INSF 2436	Stock	24" x 36"
INSF 2436	Stock	36" x 36"
INSF 2436	Stock	48" x 36"

**NOTE:**

- Each panel interlocks with another panel to form unlimited dimensions and shapes.
- The silt fence is added to the panels after the desired shape is created.

### PORTABLE SEDIMENT CONTAINMENT SYSTEM MODEL REFERENCE

INSF MODEL	STOCK/ORDER	ROUGH DIMENSIONS
PSCS 820	Order	8' x 20'
PSCS 610	Order	6' x 10'



**DISTRIBUTOR:**



**FOR MORE INFORMATION: [WWW.ROADDRAIN.COM](http://WWW.ROADDRAIN.COM)  
799 THEIS DRIVE • SHAKOPEE, MN 55379  
952-233-3055 • F 952-233-1625**